

Crisis Residential and Recovery Center (CRRC) Program Activity Report

The Crisis Residential and Recovery Center (CRRC) provides short-term respite for mentally disabled adults who have become suicidal, critically depressed, or otherwise psychiatrically incapacitated. The center serves as a social rehabilitation facility with the goal of averting the need for hospitalization. Stays are voluntary and are for up to 30 days. Services include: daily groups focused on wellness and recovery, coping skills, medication treatment, education, daily living activities, peer support, and other topics as needed.

Bolded and underlined numbers represent the highest number during the fiscal year.

There were 10 CRRC admits in April, a decrease of 28.6% from March and a decrease of 33.3% from April last year. The projected total admits suggest a decrease of 2% in admits for the current fiscal year. The CRRC bed days of 246 for April were 41.4% higher than March, but showed a reduction of 26.6% when compared to April of last year. The average length of stay for April was 25 days, 108.3% higher than March of this year and 13.6% higher than April of last year.

CRRC Admits (chart on page 2)														
FY	Jul	Aug	Sep	Oct	Nov	Dec	Jan	Feb	Mar	Apr	May	Jun	Total*	Growth +/-**
2014-15	17	<u>23</u>	17	14	15	12	17	13	14	10			182	-2%
2013-14	17	17	19	19	12	15	<u>21</u>	6	19	15	10	16	186	-27%
2012-13	26	<u>28</u>	21	25	24	19	17	22	18	17	19	20	256	-3%
2011-12	24	23	27	20	11	23	21	22	<u>29</u>	18	22	25	265	-2%
2010-11	20	26	23	23	21	23	22	19	23	19	<u>30</u>	21	270	-6%
2009-10	24	26	25	27	<u>29</u>	15	23	24	27	20	22	24	286	-24%
2008-09	31	35	34	34	31	26	27	29	37	24	28	<u>39</u>	375	

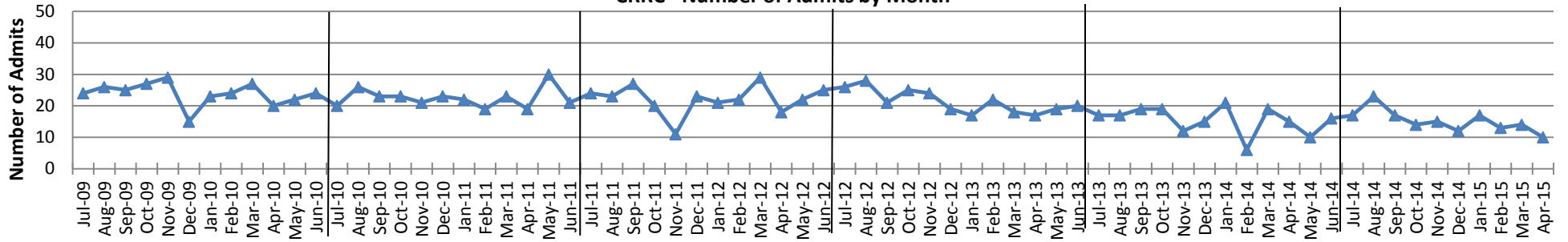
CRRC Days (chart on page 2)														
FY	Jul	Aug	Sep	Oct	Nov	Dec	Jan	Feb	Mar	Apr	May	Jun	FY Total*	Growth +/-**
2014-15	<u>345</u>	268	280	235	235	186	284	239	174	246			2,990	-3%
2013-14	274	231	255	295	136	207	333	311	212	<u>335</u>	242	243	3,074	-14%
2012-13	315	341	321	310	344	<u>361</u>	248	259	296	308	213	274	3,590	20%
2011-12	216	202	296	<u>329</u>	209	196	247	191	279	291	267	268	2,991	2%
2010-11	193	254	250	290	278	231	<u>307</u>	192	203	165	302	280	2,945	-10%
2009-10	<u>356</u>	272	323	319	311	199	231	266	245	241	238	267	3,268	-12%
2008-09	330	300	301	248	270	276	318	319	<u>366</u>	310	312	350	3,700	

CRRC Average Length of Stay (Bed Days/Discharge Count) - (chart on page 2)														
FY	Jul	Aug	Sep	Oct	Nov	Dec	Jan	Feb	Mar	Apr	May	Jun	FY Avg. LOS	Growth +/-**
2014-15	20	12	16	17	16	16	17	11	12	<u>25</u>			16	-13%
2013-14	16	14	13	16	11	14	16	<u>52</u>	11	22	24	15	19	32%
2012-13	12	12	15	12	14	<u>19</u>	15	12	16	18	11	14	14	19%
2011-12	9	9	11	16	<u>19</u>	9	12	9	10	16	12	11	12	8%
2010-11	10	10	11	13	13	10	<u>14</u>	10	9	9	10	13	11	-4%
2009-10	<u>15</u>	10	13	12	11	13	10	11	9	12	11	11	12	13%
2008-09	11	9	9	7	9	11	12	11	10	<u>13</u>	11	9	10	

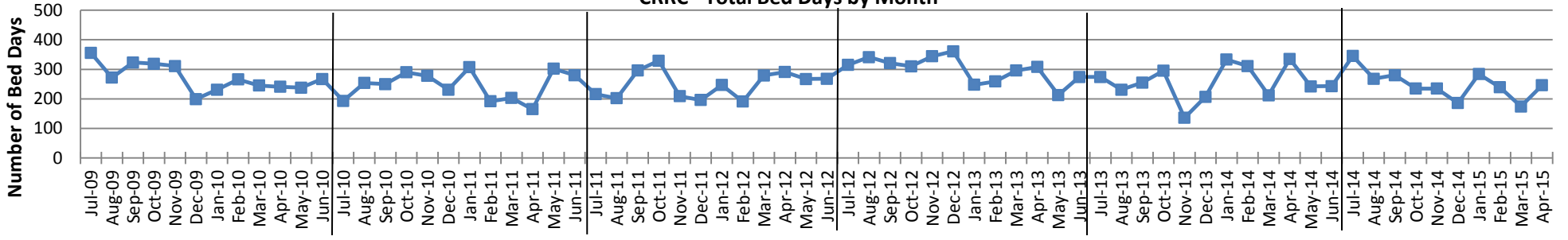
* Current Fiscal Year is a projected yearend total.

** Growth +/- is calculated based on the prior Fiscal Year comparison to Current Fiscal Year.

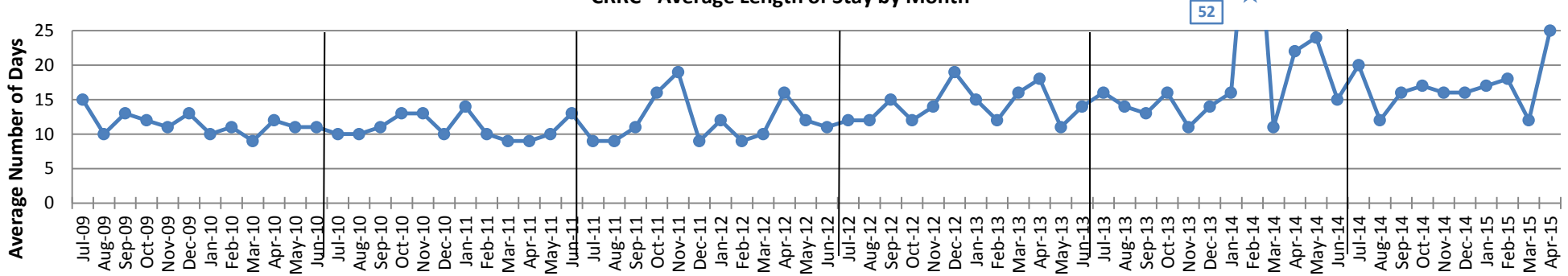
CRRC - Number of Admits by Month



CRRC - Total Bed Days by Month



CRRC - Average Length of Stay by Month



Contact Location for CRRC Admits

Count and percent of admits to the Crisis Residential and Recovery Center (CRRC) by contact location.

	Mo. Total/ FY Avgs	CSS	%	Local ER	%	Not Recorded	%	Other Provider	%	Psychiatric Inpatient	%	SCMH OP	%
<i>FY 09/10</i>	<i>24</i>	<i>9</i>	<i>36.6%</i>	<i>2</i>	<i>4.9%</i>	<i>1</i>	<i>1.7%</i>	<i>1</i>	<i>1.7%</i>	<i>4</i>	<i>15.7%</i>	<i>9</i>	<i>39.4%</i>
<i>FY 10/11</i>	<i>23</i>	<i>8</i>	<i>36.3%</i>	<i>3</i>	<i>6.7%</i>	<i>2</i>	<i>4.8%</i>	<i>2</i>	<i>1.5%</i>	<i>3</i>	<i>10.0%</i>	<i>9</i>	<i>40.7%</i>
<i>FY 11/12</i>	<i>22</i>	<i>11</i>	<i>50.2%</i>	<i>2</i>	<i>1.9%</i>	<i>1</i>	<i>0.8%</i>	<i>2</i>	<i>2.3%</i>	<i>3</i>	<i>14.0%</i>	<i>7</i>	<i>30.9%</i>
<i>FY 12/13</i>	<i>21</i>	<i>1</i>	<i>4.7%</i>	<i>1</i>	<i>4.7%</i>	<i>0</i>	<i>0%</i>	<i>2</i>	<i>8.8%</i>	<i>8</i>	<i>38.3%</i>	<i>12</i>	<i>53.9%</i>
Jul 13	17	N/A	N/A	0	0%	0	0%	3	17.6%	4	23.5%	10	58.8%
Aug 13	17	N/A	N/A	1	5.9%	0	0%	4	23.5%	1	5.9%	11	64.7%
Sep 13	19	N/A	N/A	0	0%	0	0%	5	26.3%	3	15.8%	11	57.9%
Oct 13	19	N/A	N/A	2	10.5%	0	0%	1	5.3%	0	0%	16	84.2%
Nov 13	12	N/A	N/A	1	8.3%	0	0%	3	25.0%	0	0%	8	66.7%
Dec 13	15	N/A	N/A	1	6.7%	0	0%	2	13.3%	6	40.0%	6	40.0%
Jan 14	21	N/A	N/A	0	0%	0	0%	6	28.6%	5	23.8%	10	47.6%
Feb 14	6	N/A	N/A	1	16.7%	0	0%	0	0%	2	33.3%	3	50.0%
Mar 14	19	N/A	N/A	1	5.3%	0	0%	0	0%	4	21.1%	14	73.7%
Apr 14	15	N/A	N/A	1	6.7%	0	0%	0	0%	3	20.0%	11	73.3%
May 14	10	N/A	N/A	0	0%	0	0%	1	10.0%	1	10.0%	8	80.0%
Jun 14	16	N/A	N/A	1	6.3%	0	0%	5	31.3%	4	25.0%	6	37.5%
Jul 14	17	N/A	N/A	0	0%	0	0%	3	17.6%	2	11.8%	12	70.6%
Aug 14	23	N/A	N/A	0	0%	0	0%	0	0%	5	21.7%	18	78.3%
Sep 14	17	N/A	N/A	0	0%	0	0%	3	17.6%	2	11.8%	12	70.6%
Oct 14	14	N/A	N/A	0	0%	0	0%	2	14.3%	3	21.4%	9	64.3%
Nov 14	15	N/A	N/A	0	0%	0	0%	0	0%	4	26.7%	11	73.3%
Dec 14	12	N/A	N/A	0	0%	0	0%	0	0%	1	8.3%	11	91.7%
Jan 15	17	N/A	N/A	0	0%	0	0%	1	5.9%	2	11.8%	14	82.4%
Feb 15	13	N/A	N/A	0	0%	0	0%	0	0%	2	15.4%	11	84.6%
Mar 15	14	N/A	N/A	0	0%	0	0%	0	0%	1	7.1%	13	92.9%
Apr 15	10	N/A	N/A	0	0%	0	0%	1	10.0%	4	40.0%	5	50.0%
<i>FY 14/15</i>	<i>13</i>	<i>N/A</i>	<i>N/A</i>	<i>0</i>	<i>0%</i>	<i>0</i>	<i>0%</i>	<i>2</i>	<i>15.8%</i>	<i>3</i>	<i>20.5%</i>	<i>12</i>	<i>91.6%</i>

*Fiscal Year Averages in bold/italics

